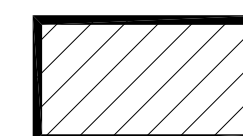


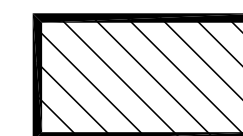
MAIN FLOOR PLAN
SCALE: 1/8"=1'-0"

MEZZANINE FLOOR PLAN
SCALE: 1/8"=1'-0"

TOTAL AREA OF MAIN FLOOR OFFICE SPACE & MEZZANINE TO CLEAN = 3,466 sq.ft.



TOTAL AREA OF MAIN FLOOR WAREHOUSE #1 TO CLEAN = 2,817 sq.ft.



TOTAL AREA OF MAIN FLOOR WAREHOUSE #2 TO CLEAN = 6,807 sq.ft.



| No. | REVISION/DESCRIPTION | BY | DATE |
|------|----------------------|----|------|
| SEAL | | | |

| DRAWN | TO | CHECKED | DESIGNED | APPROVED |
|-------|-----------|----------|----------|----------|
| DATE | 2016.3.17 | USER | | |
| | | APPROVAL | | |

THE CITY OF WINNIPEG
PLANNING, PROPERTY AND
DEVELOPMENT DEPARTMENT
MUNICIPAL ACCOMMODATIONS DIVISION
3-65 GARRY STREET, R3C 4K4

PROJECT
CITY OF WINNIPEG
ARCHIVES AND RECORDS CONTROL

50 MYRTLE STREET

SHEET TITLE
BASEMENT FLOOR PLAN
MAIN FLOOR PLAN
MEZZANINE FLOOR PLAN 0050MT01

| SCALE | PROJECT No: | SHEET No: |
|----------|-------------|-----------|
| AS SHOWN | 353-2018 | A1 |